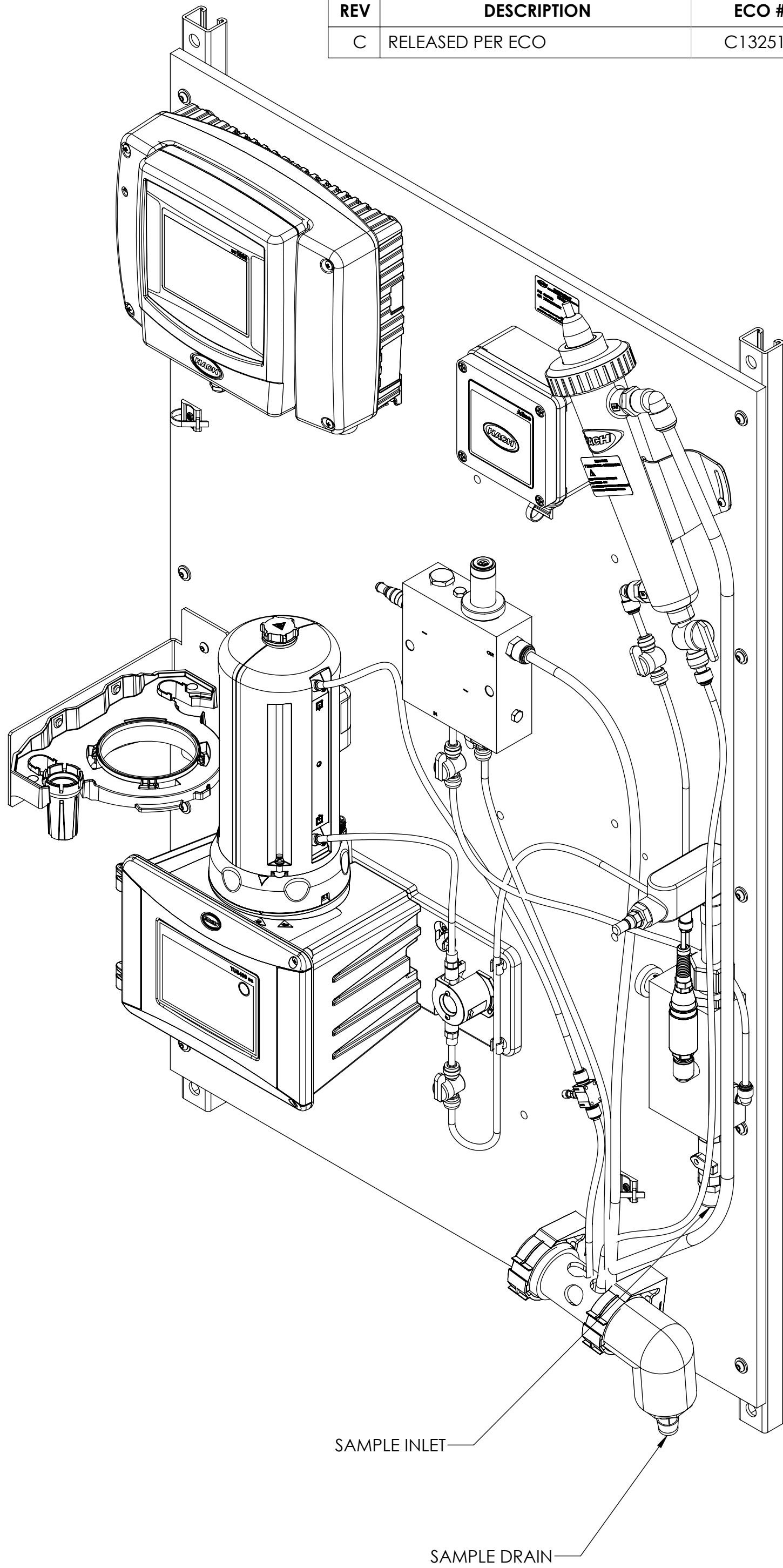
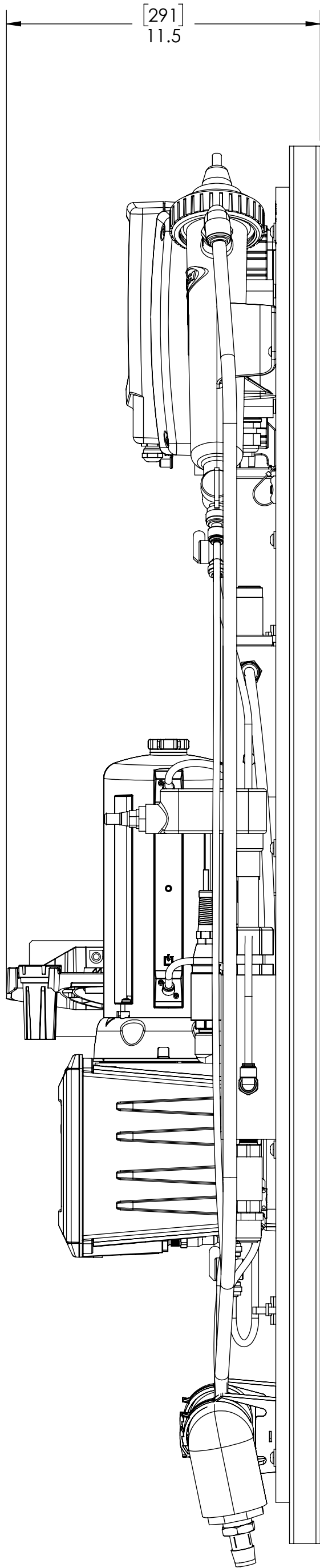
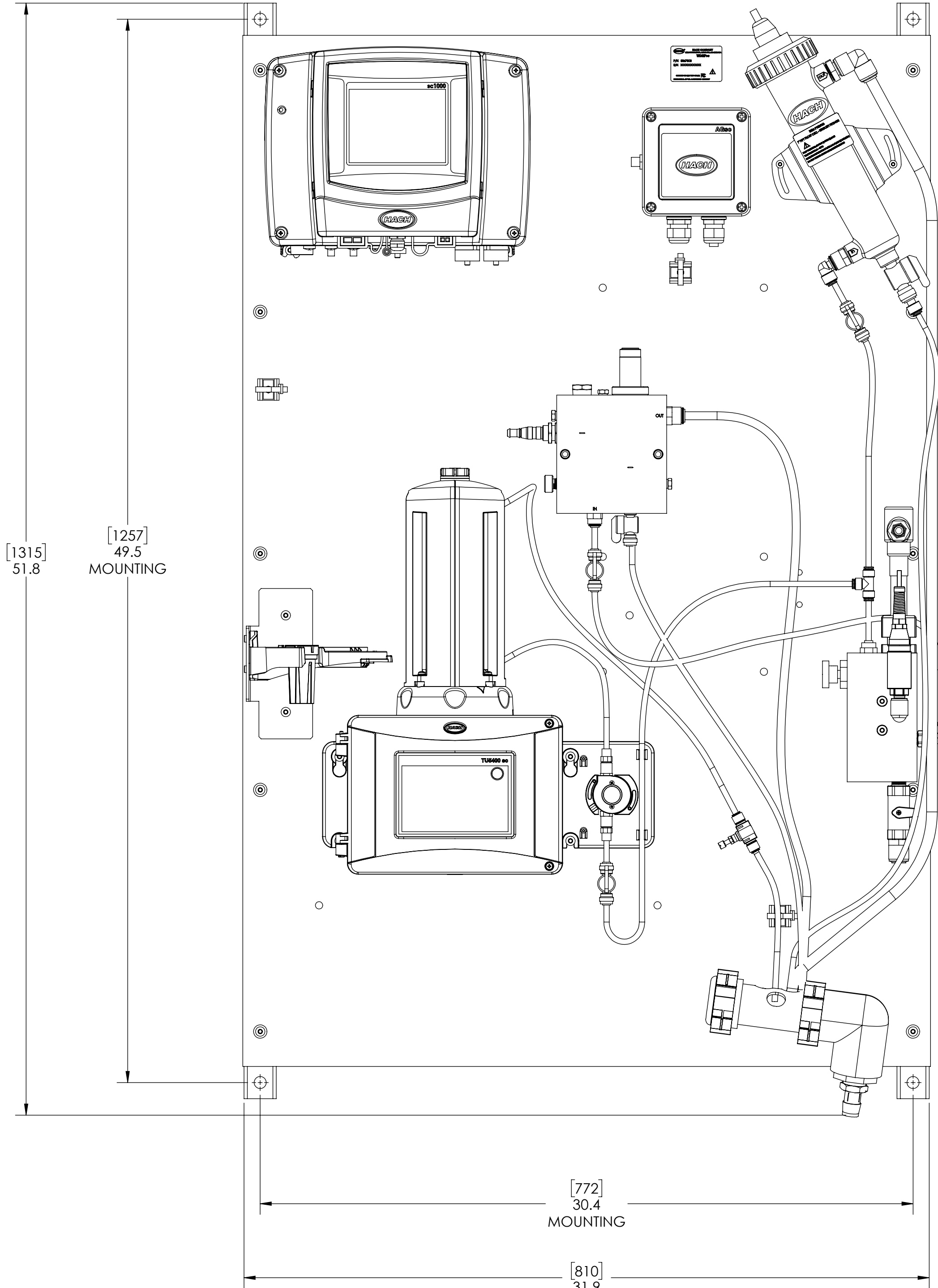

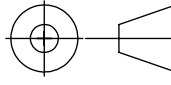


- POWER REQUIREMENTS
- 115/230 VAC, 60Hz
- SAMPLE TEMPERATURE
- 5-40 °C (41-104 °F)
- SAMPLE PRESSURE
- 75 psig (5.2 bar) MAXIMUM
- PROCESS CONNECTION
- SAMPLE INLET: 1/2" OD TUBE
 - SAMPLE DRAIN: 3/4" ID HOSE BARB
- WEIGHT
- 31.8 kg (70 lb)

REVISION			
REV	DESCRIPTION	ECO #	DATE
C	RELEASED PER ECO	C132510	6/5/2023



PART CLASSIFICATION MINOR B		THE SOLID CAD FILE IS THE CONTROLLING AUTHORITY FOR PART GEOMETRY UNLESS OTHERWISE SPECIFIED:		NAME R SHETTY		DATE 06/20/2019		 HACH COMPANY 5600 LINDBERGH DR. LOVELAND, CO. 80538	
MATERIAL		DIMENSIONS ARE IN INCHES (MM)		ENGINEER A. POTT	1/9/2026				
HACH MATERIAL PART NUMBER		TOLERANCES: X. XX XXX ANGLES = 1.5°		PRODUCTION Benjamin Sattler	6/5/2023	TITLE: TRANSMITTAL DRAWING, WDMF, CL10SC			
NOTICE: HACH COMPANY CLAIMS PROPRIETARY RIGHTS IN THE INFORMATION DISCLOSED ON THIS DRAWING. IT IS ISSUED IN CONFORMANCE WITH THE INFORMATION DISCLOSED ON THIS DRAWING. IT IS NOT TO BE USED TO MANUFACTURE ANYTHING, WHETHER OR NOT SHOWN HEREIN, REPRODUCED OR DISCLOSED TO ANYONE WITHOUT DIRECT PERMISSION FROM HACH COMPANY.		ALL HIDDEN PART FEATURES SHALL BE HELD TO SURFACE PROFILES AS FOLLOWS: [0.10] FOR FEATURES < 4.0" [0.02] FOR FEATURES > 4.0" - 10.0" [0.01] FOR FEATURES > 10.0"		INTERPRETATION GEOMETRIC TOLERANCING: PER ISO 11.4.2.01					
		THIRD ANGLE PROJECTION 				SIZE DWG. NO.		REV	
		DO NOT SCALE DRAWING				D 886XXXXCL1087		C	
						SCALE: 1:4		SHEET 1 OF 1	